

FIG

Commission 10

**Construction Economics
and Management (CEM):**

Presented by

**QS Mercy Iyortyer
Commission 10 Chair**

At NIQS 2023 BGM

23rd November, 2023



International Federation of Surveyors
Fédération Internationale des Géomètres
Internationale Vereinigung der Vermessungsingenieure

WEBSITE: WWW.FIG.NET



- Leading international organization representing the interests of surveyors worldwide: surveying, cadastre, valuation, mapping, quantity surveying, geodesy, geospatial, and hydrography.
- Founded in 1878, in Paris by delegates from 7 national associations - Belgium, France, Germany, Great Britain, Italy, Spain and Switzerland – was known as the Fédération Internationale des Géomètres.
- Anglicized to “International Federation of Surveyors” (FIG).
- United Nations and World Bank recognized NGO, representing more than 120 countries throughout the world.



Vision

FIG's vision is to keep and improve its role as the premier non-governmental organisation that represents the interests of surveyors worldwide.



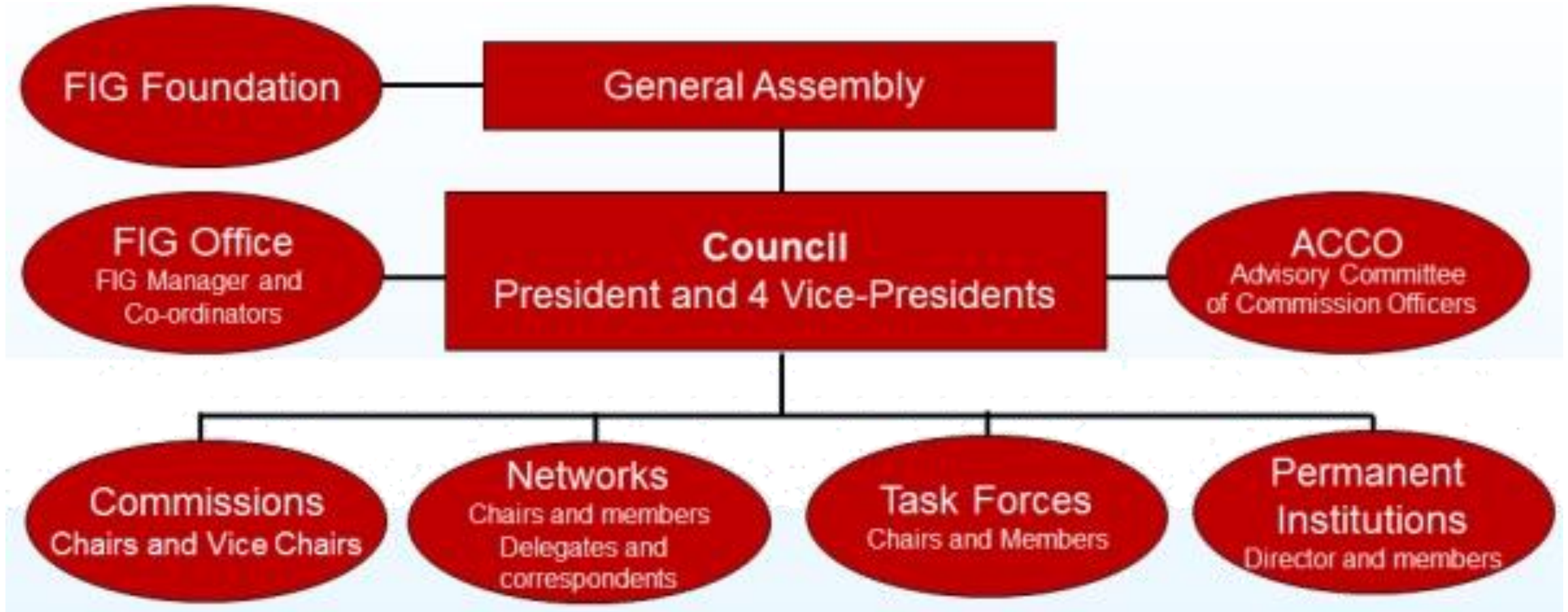
FIG's ROLE



- Provide support for a prosperous and sustainable profession of surveyors.
- Translate a sustainable development agenda into action.
- Support international collaboration among its members for the progress of surveying in all its fields and applications.
- Collaborate with UN relevant bodies, World Bank, and its sister associations on geospatial information and the management of “land”, “sea” and the “built” environment.
- To map earth's surface and to manage it in a sustainable way.

FIG STRUCTURE

FIG



10 Commissions, 14 Task Forces, 5 Networks

MEMBERSHIP LEVELS



Five (5) Membership Levels:

- Member Associations (NIQS falls in this category)
- Affiliates
- Corporate Members
- Academic Members
- Correspondents

Three (3) Honorary Membership Levels:

- Honorary Presidents
- Honorary Members
- Honorary Ambassadors

COMMISSIONS



Commission 1 – Professional Standards and Practice



Commission 6 – Engineering Surveys



Commission 2 – Professional Education



Commission 7 – Cadastre and Land Management



Commission 3 – Spatial Information Management



Commission 8 – Spatial Planning and Development



Commission 4 – Hydrography



Commission 9 – Valuation and the Management of Real Estate



Commission 5 – Positioning and Measurement



Commission 10 - Construction Economics and Management

10 COMMISSION CHAIRMEN



TASK FORCES



Task Force on FIG and the Sustainable Development Goals

2019-2022
2023-2026



FIG Climate Compass Task Force

2023-2026



FIG Task Force on Spatially Enabled Societies

2009-2012



FIG Task Force On Developing Global Land Tools for Pro Poor Land Management

2007-2010

Task Force on the Role of FIG in international Trends and Future Geospatial Information Ecosystem

2023-2026



Task Force on The Surveyor's Profession: Evolutionary Diversity and Inclusion

2023-2026



FIG Task Force on Institutional and Organisational Development

2007-2010



FIG Task Force on Under-Represented Groups in Surveying

1999-2002



FIG Task Force on Real Estate Market Study

2015-2018



FIG Task Force on Surveyors and the Climate Change

2011-2014



FIG Task Force on Mutual Recognition of Qualifications

1999-2002



FIG Task Force on Standards

1999-2002



FIG Africa Task Force

2015-2018



FIG Task Force on Property and Housing

2011-2014

NETWORKS



FIG NETWORKS



FIG Young
Surveyors Network



FIG Standards Network

FIG Regional Capacity Development Networks



Africa
(ARN)



Asia/Pacific
(AP-CPD)



Americas



- ❖ I was nominated as Chair of Commission 10 by NIQS led by the current President but initiated and followed up by the past 4 presidents before him.
- ❖ My nomination was ratified by the General Assembly on 28th May 2023 in Orlando, Florida.
- ❖ This would have been witnessed by over 50 NIQS members but for challenges with their visas emanating from the American Embassy.
- ❖ The FIG President Diane Dumashie has sent her sincere regrets and admitted that this incidence adversely affected participation at the conference.
- ❖ FIG Council has deliberated on forestalling this kind of challenge moving forward by starting the visa processing earlier.



- ❖ With the support of the current FIG President, efforts are being made to enhance the participation of Quantity Surveyors in FIG.
- ❖ The Commission intends to reach out for more and better collaboration with other sister organizations, regional and international related bodies such as ICEC, CASLE, PAQS, AAQS for joint participation of mutual benefits. Her efforts for the Commission is highly commendable.
- ❖ FIG will continue to partner with United Nations and World Bank in areas of common interest.
- ❖ It is therefore, my hope that there will be mutual benefits that NIQS will derive from its participation under Commission 10 with the above development.

The background of the slide is a photograph of a construction site at sunset. The sky is a mix of orange, yellow, and blue. In the foreground, the silhouettes of construction workers are visible as they work on a building's steel framework. A large tower crane is prominent on the left side of the frame. The overall scene is one of active construction during the 'golden hour' of the day.

Commission 10 Construction Economics and Management (CEM)



Ing. Robert Sinkner
Vice Chair Administration/Secretary
FIG Commission 10
Email: rsinkner@tknoeo.cz



QS MERY T. IYORTYER
FIG Commission 10 Chairperson
Email: Miortyer@gmail.com



Prof. Christian Clemen
Chair of Working Group 10.1
Digital Technologies in Construction and Building
Information Modelling
Email: christian.clemen@htw-dresden.de



QS Kwadwo Osei-Asante
Chair of Working Group 10.2
Sustainable Construction in the Built
Environment
Email: oseiakh@yahoo.com



Ts. Sr Khoo Sui Lai (Eric)
Chair of Working Group 10.3
Cost Information Management
Email: KhooSL@ucsiuniversity.edu.my



QS Bolaji Sotunde, Nigeria
Chair of Working Group 10.4
Commercial and Project Management
Email: bsotunde@yahoo.com

Construction Economics and Management (CEM)



Involves determining the most cost-effective ways to manage construction projects from conception to completion (planning, designs, and construction phases), and beyond.



Includes quantity surveying, construction management, building surveying, , cost engineering, commercial, project and programme management and their value chains.



COMMISSION 10 WORK PLANS 2023-2026

**Work Plan 1 – Digital Technologies in
Construction and Building
Information Modelling (BIM)**

**Work Plan 2 – Sustainable
Construction in the Built
Environment**

**Work Plan 3 – Cost Information
Management**

**Work Plan 4 – Commercial /Project
Management**

Working Group 1:

Digital Technologies in Construction and Building Information Modelling (BIM)

Chair:
Prof. Christian Clemen -
Germany

- Explore the use of evolving digital technologies such as Building Information Modelling (BIM), Drones, Artificial Intelligence (AI), 3D Printing and the like to improve the efficiency and accuracy of construction projects.
- Digital Technologies help to resolve the highly fragmented nature of Construction Processes that has many disciplines and processes, high risk, slow processes and hazards associated with it.
- Digital Technologies do address these issues by improving planning, designs and real-time monitoring of building performances.
- Ultimately enhances better integration of all construction disciplines and processes.



Working Group 2:

Sustainable Construction in the Built Environment

Chair:
Kwando Osei-Asante –
Ghana

- Sustainability has gained importance in global affairs and so has sustainable construction.
- Expected to lead the direction of the future of the Built Environment.
- Sustainable Construction will enhance the efficient use of resources for economic growth and social progress that meets the needs of those concerned, whilst protecting the environment. Example: smart buildings and cities



Working Group 3: Cost Information Management

Chair:
Ts. Sr Khoo Sui Lai (Eric) –
Malaysia

- Will examine the most appropriate Cost Information Management tools that enhance good business decisions and growth for companies and governments alike.
- Will also yield optimum investment results and provide budgets for investors, financiers, organizations and project owners.



Working Group 4: Commercial /Project Management

Chair:
QS Bolaji Sotunde –
Nigeria

- Will cover the area of profitable management of projects, programmes and contracts.
- Attempt to leverage on emerging trends in managing construction projects efficiently as construction economists and managers.





**UPCOMING FIG WORKING WEEK
ACCRA, GHANA - 2024**



FIG Working Week 2024

19-24 May Accra, Ghana

Your World, Our World: Resilient Environment and Sustainable Resource Management for All

	FRIDAY 17 MAY	SATURDAY 18 MAY	SUNDAY 19 MAY	MONDAY 20 MAY	TUESDAY 21 MAY	WEDNESDAY 22 MAY	THURSDAY 23 MAY	FRIDAY 24 MAY
Morning				Newcomers Session				
9.00-10.00	Tours	Pre-events	FIG General Assembly	Workshops Special Sessions	Workshops Special Sessions	Workshops Special Sessions	Presidents meeting (tentatively)	Tours
10.00-10.30				Break	Break	Break		
10.30-12.30				Plenary Session	Plenary Session	Plenary Session	FIG General Assembly	
12.30-14.00				Lunch				
14.00-15.30				8-10 parallel Technical Sessions	8-10 parallel Technical Sessions	8-10 parallel Technical Sessions	Farewell Reception	
15.30-16.00				Break	Break	Break		
16.00-17.30				Opening Ceremony	8-10 parallel Technical Sessions	8-10 parallel Technical Sessions	8-10 parallel Technical Sessions	
			EXHIBITION					
Evening			Welcome reception	Ghanaian Evening	Commission dinners	Gala Dinner		

SHOW OF PREPARATION FOR WORKING WEEK 2024 - GHANA



PHOTO GALLERY



A cross-section of participants attending a session for commission 10 during FIG 2023 event



QS Mercy Iyortyer,
Chair Commission 10
Session on Sustainable Construction in the Built Environment

PHOTO GALLERY





SEE YOU IN GHANA!

FOLLOW US ON LINKEDIN



FIG Commission 10 - Construction Economics and Management

Construction

Digital construction (incl. BIM) and different approaches to the financial management of construction around the world

Follow

**THANK YOU
FOR
LISTENING**



International Federation of Surveyors (FIG)
Ms. Louise Friis-Hansen
Kalvebod Brygge 31-33
DK-1780 Copenhagen V, Denmark
T: +45 93910812 E: lfh@fig.net /
www.fig.net